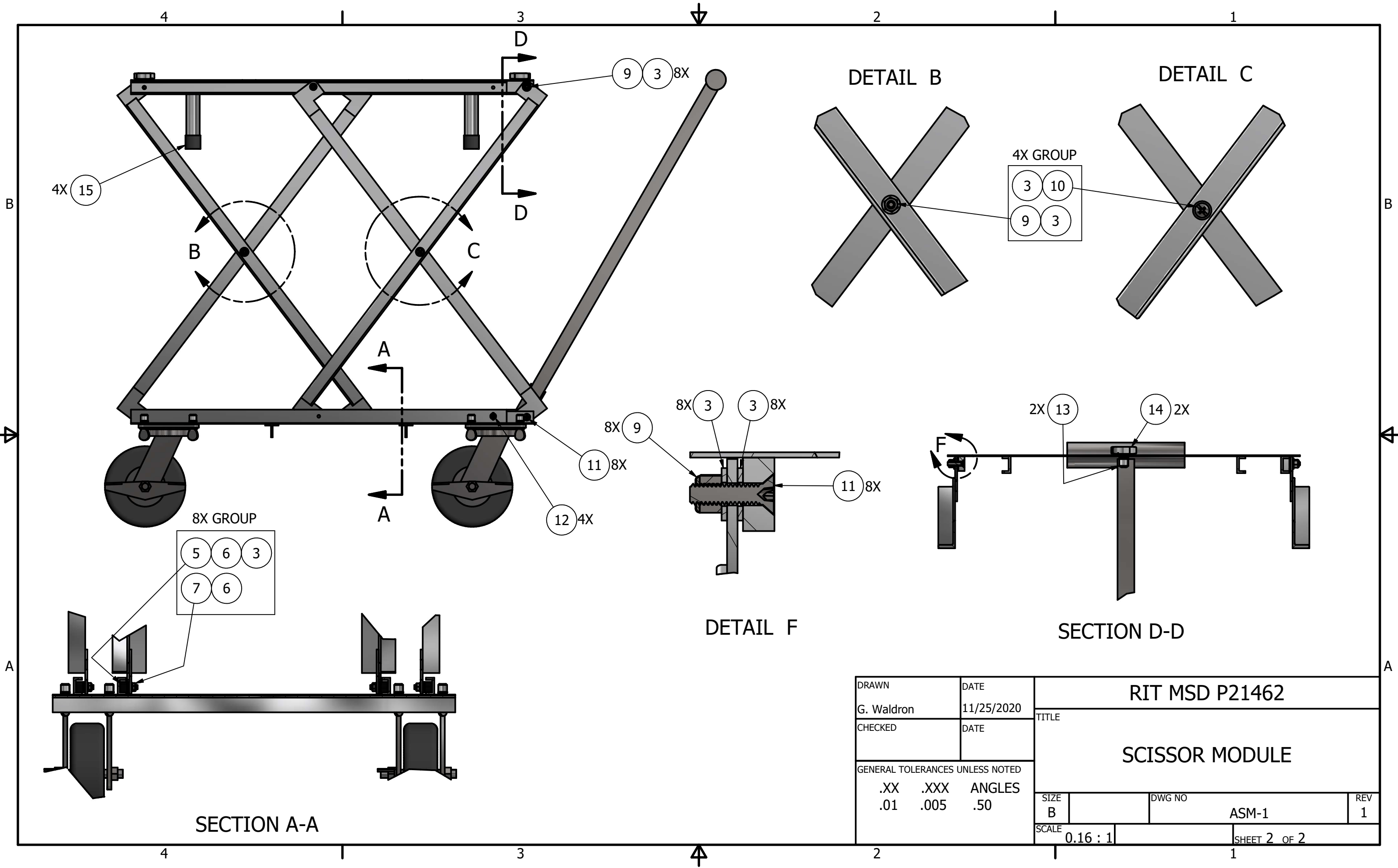


PARTS LIST				
ITEM	QTY	PART NUMBER	DESCRIPTION	
1	1	ASM-11	SCISSOR MODULE TOP	
2	1	ASM-12	SCISSOR MODULE BOTTOM	
3	32	MMC-98180A110	1/4" STEEL WASHER, 5/8 OD	
4	4	ASM-13	SCISSOR ARM A	
5	8	MSC-CR-5-8-A-X	5/8" OD CAM FOLLOWER	
6	16	MMC-92510A398	1/4" ALUMINUM WASHER, 1/16 THK, 1/2 OD	
7	8	MMC-90566A210	1/4-28 THIN STEEL NYLON LOCK NUT	
8	4	ASM-14	SCISSOR ARM B	
9	12	MMC-90640A129	1/4-20 STEEL NYLON LOCK NUT	
10	4	MMC-90604A541	1/4-20 x 3/4" PAN HEAD COMBO DRIVE	
11	8	MMC-90273A542	1/4-20 x 1" STEEL FLAT HEAD SCREW	
12	4	MMC-90179A537	1/4-20 x 1/2" STEEL THUMB SCREW	
13	2	MMC-94020A359	3/8-16 ALUMINUM RIVET NUT	
14	2	MMC-91185A863	3/8-16 x 3/4" PLASTIC THUMB SCREW	
15	4	AMZ-B0742KBV6M	1" ID RUBBER CAP	
16	1	HFT-94354	HAUL-MASTER SWIVEL HANDLE	
DRAWN		DATE	RIT MSD P21462	
G. Waldron		11/25/2020		
CHECKED		DATE	TITLE SCISSOR MODULE	
GENERAL TOLERANCES UNLESS NOTED				
.XX	.XXX	ANGLES		
.01	.005	.50		
SIZE		DWG NO		REV
B		ASM-1		1
SCALE		SHEET 1 OF 2		
0.15 : 1				



SECTION A-A

DETAIL F

SECTION D-D

DRAWN G. Waldron	DATE 11/25/2020	RIT MSD P21462		
CHECKED	DATE	TITLE SCISSOR MODULE		
GENERAL TOLERANCES UNLESS NOTED .XX .XXX ANGLES .01 .005 .50		SIZE B	DWG NO ASM-1	REV 1
		SCALE 0.16 : 1	SHEET 2 OF 2	