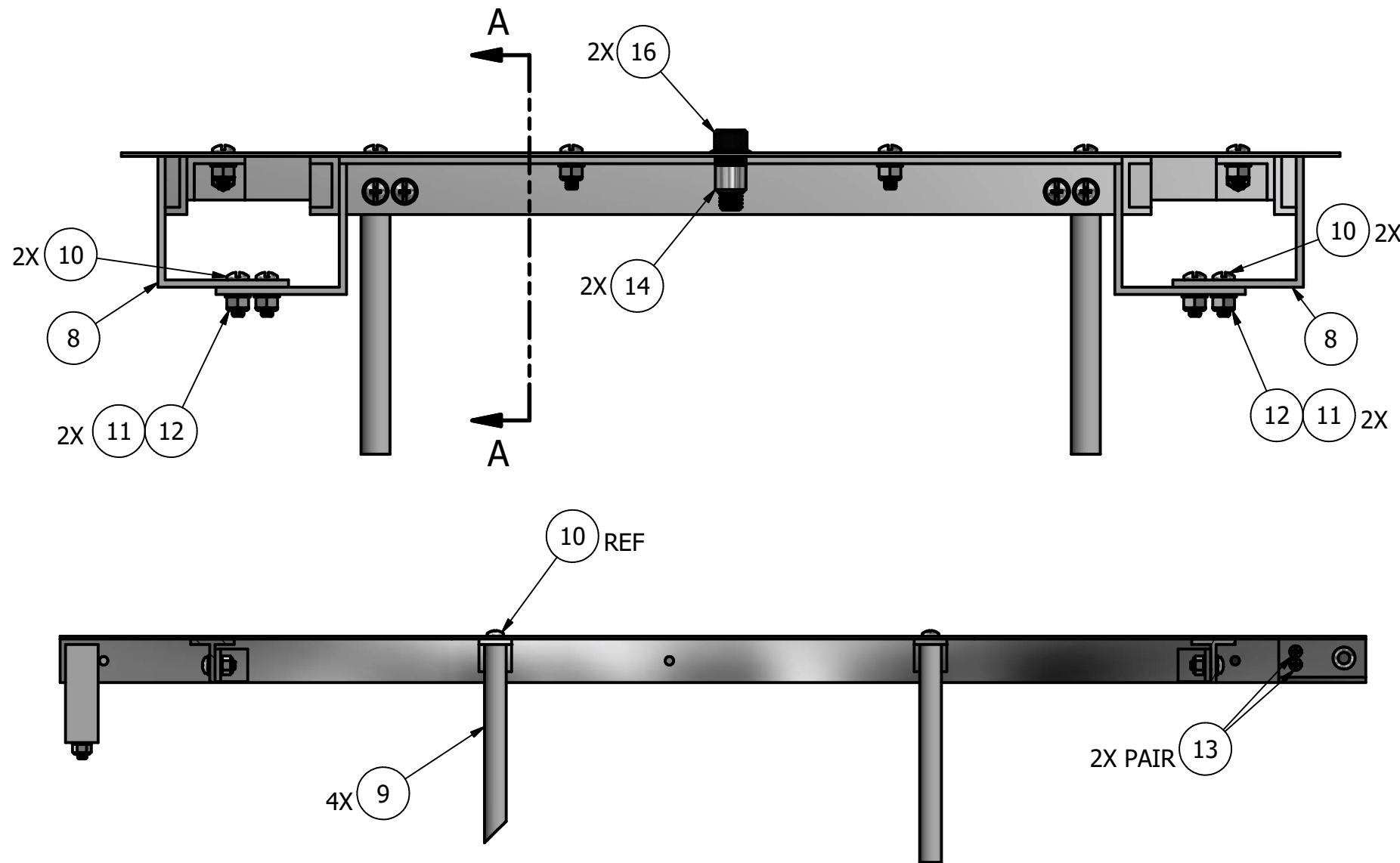
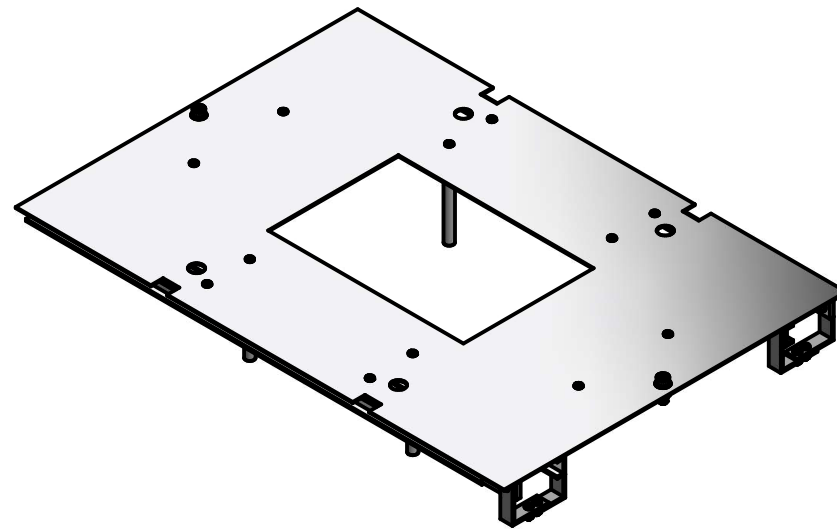


NOTES:

1. ITEM 1 IS SYMMETRIC
2. ITEM 14 IS A RIVET NUT AND REQUIRES APPROPRIATE INSTALLATION

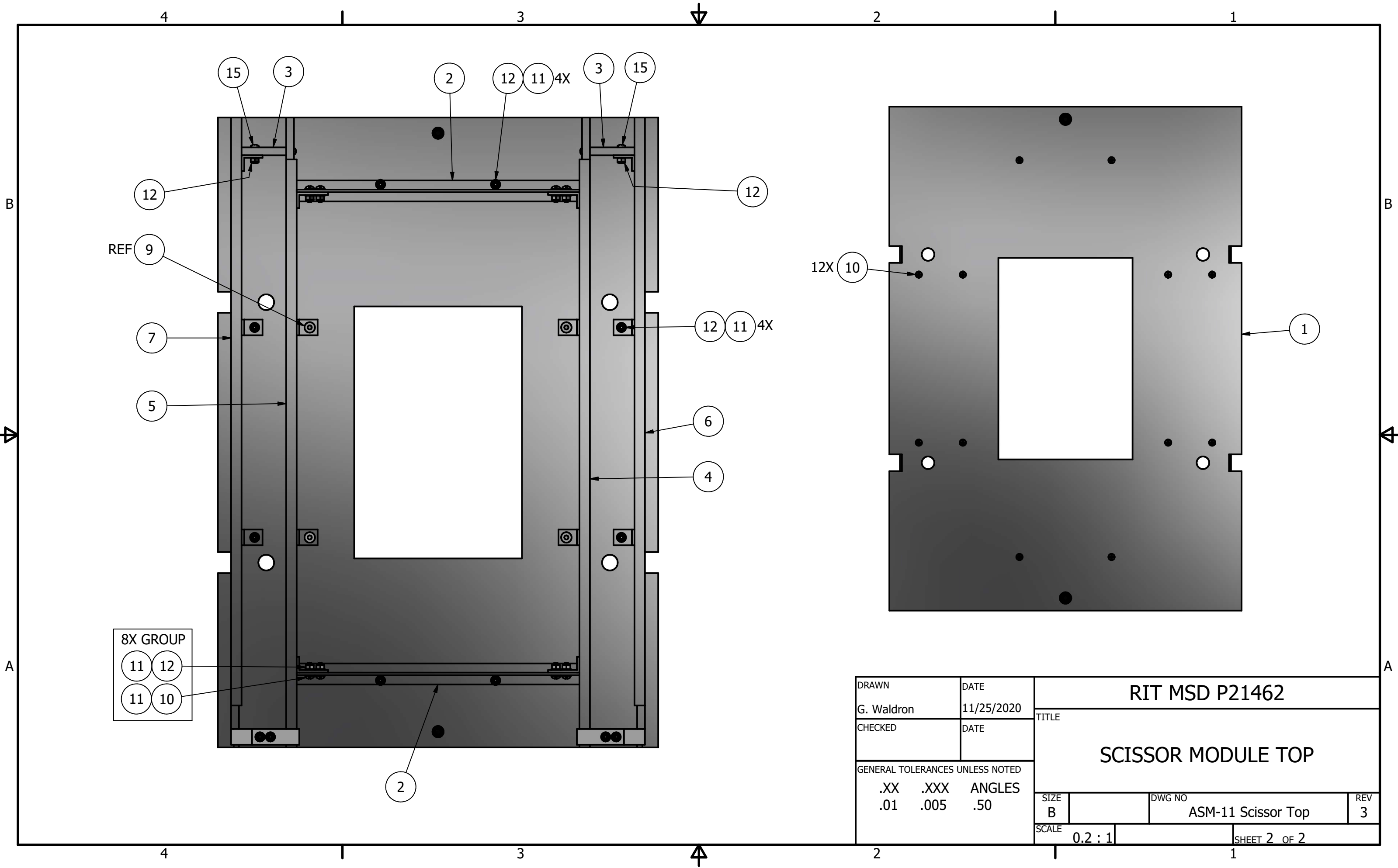
REVISION HISTORY	
REV	DATE
1	11/25/2020
2	2/21/2021
3	3/28/2021



SECTION A-A

PARTS LIST			
ITEM	QTY	PART NUMBER	DESCRIPTION
1	1	MMC-89015K51_7	SCISSOR MODULE TOP PLATE
2	2	MMC-1668T238_1	T-SUPPORT A
3	2	OLM-1153_1	FRAME CONNECTOR BLOCK
4	1	ASM-111	TOP FRAME SECTION A
5	1	ASM-112	TOP FRAME SECTION B
6	1	ASM-113	TOP FRAME SECTION C
7	1	ASM-114	TOP FRAME SECTION D
8	2	OLM-19846_2	FRAME BRACKET D
9	4	OLM-1084_1	MINIMUM HEIGHT LEG
10	24	MMC-90604A266	10-32 x 5/8" PAN HEAD COMBO DRIVE
11	28	MMC-93286A011	#10 ALUMINUM WASHER
12	22	MMC-90631A411	10-32 STEEL NYLON LOCK NUT
13	4	MMC-90604A148	6-32 x 1/2" PAN HEAD COMBO DRIVE
14	2	MMC-94020A359	3/8-16 ALUMINUM RIVET NUT
15	2	MMC-90604A269	10-32 x 3/4" PAN HEAD COMBO DRIVE
16	2	MMC-91251A624	3/8-16 x 1" SOCKET HEAD CAP SCREW

DRAWN		DATE		RIT MSD P21462	
G. Waldron		11/25/2020		TITLE SCISSOR MODULE TOP	
CHECKED		DATE			
GENERAL TOLERANCES UNLESS NOTED					
.XX		.XXX		SIZE	
.01		.005		B	
		ANGLES		DWG NO	
		.50		ASM-11 Scissor Top	
				REV	
				3	
				SCALE	
				0.12 : 1	
				SHEET 1 OF 2	



DRAWN	DATE	RIT MSD P21462			
G. Waldron	11/25/2020	TITLE			
CHECKED	DATE				
GENERAL TOLERANCES UNLESS NOTED		SCISSOR MODULE TOP			
.XX	.XXX	ANGLES			
.01	.005	.50			
		SIZE		DWG NO	REV
		B		ASM-11 Scissor Top	3
		SCALE	0.2 : 1	SHEET 2 OF 2	