

Home

What is Adobe Connect?

Adobe Connect is a **web-based communication tool** that allows faculty and students to collaborate over the internet in real-time.

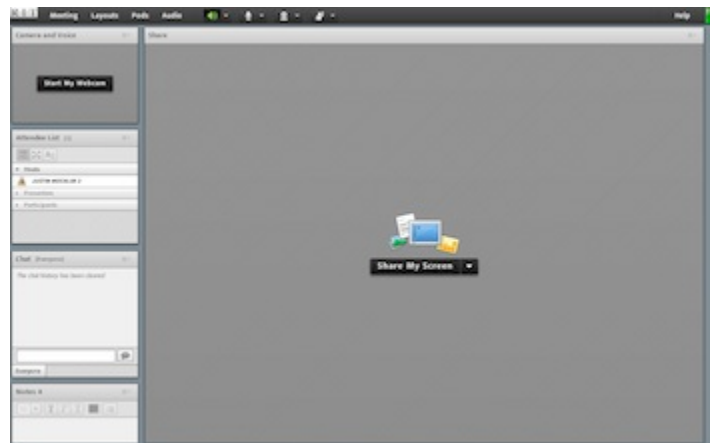
See the related [Teaching Elements Guide to Adobe Connect](#) for more details on instructional uses and the pedagogical basis of realtime web conferencing.

Faculty Quick Links

- [Instructional Uses](#)
- [Quickstart Guide](#)
- [Recording Meetings](#)
- [Troubleshooting](#)

Student Quick Links

- [Participant Quickstart Guide](#)
- [Entering a Meeting Room](#)
- [Setting Your Status](#)
- [Presenting Content - Students](#)
- [Troubleshooting](#)



Support

Academic Technology Support

The Wallace Center

Phone: 585-475-2551 (Press 2)

Email: online@rit.edu

Hours of Operation and Instant Messenger contact: <http://wallacecenter.rit.edu/tls/contact/>