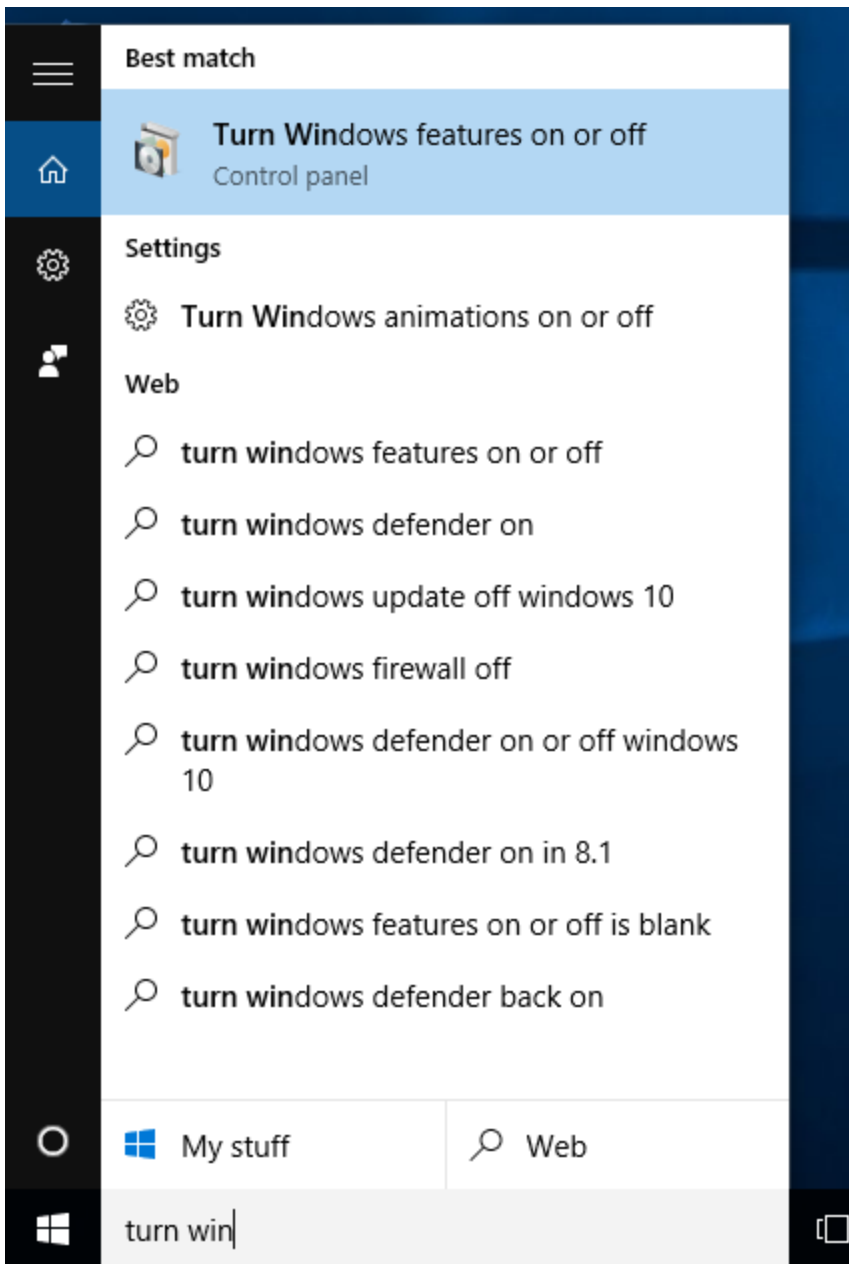


# Windows 10 Printer Setup

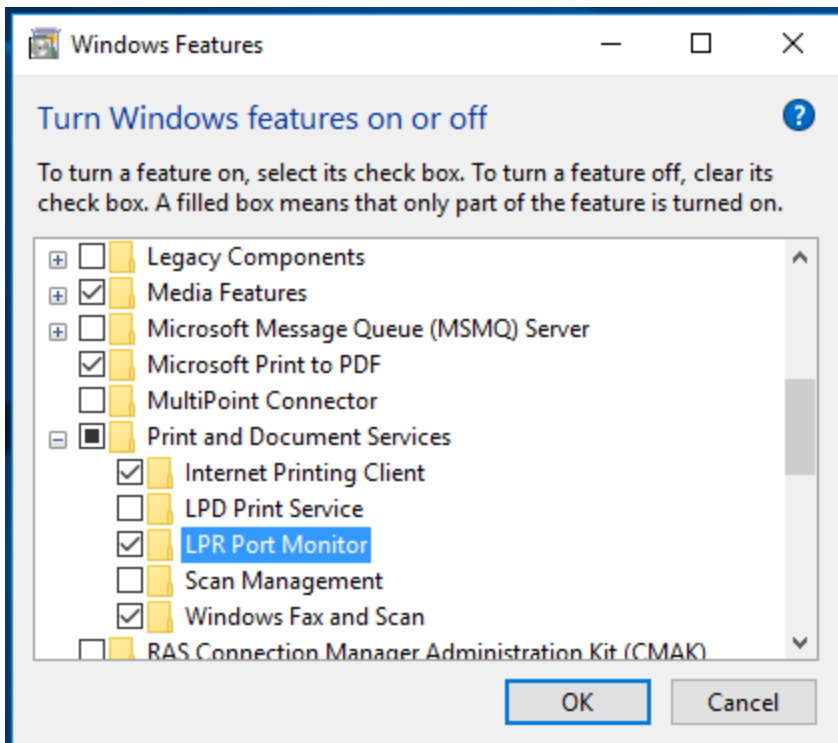
This tutorial is for CIS computer that run Windows 10

## Enable LPR Port Monitor Windows Features

The system that CIS uses for printing requires the LPR port feature to do network printing. To enable this feature, first open start and type "turn windows features" into the search bar. Click the "Turn Windows Features on or off" option that appears at the top of the start panel.



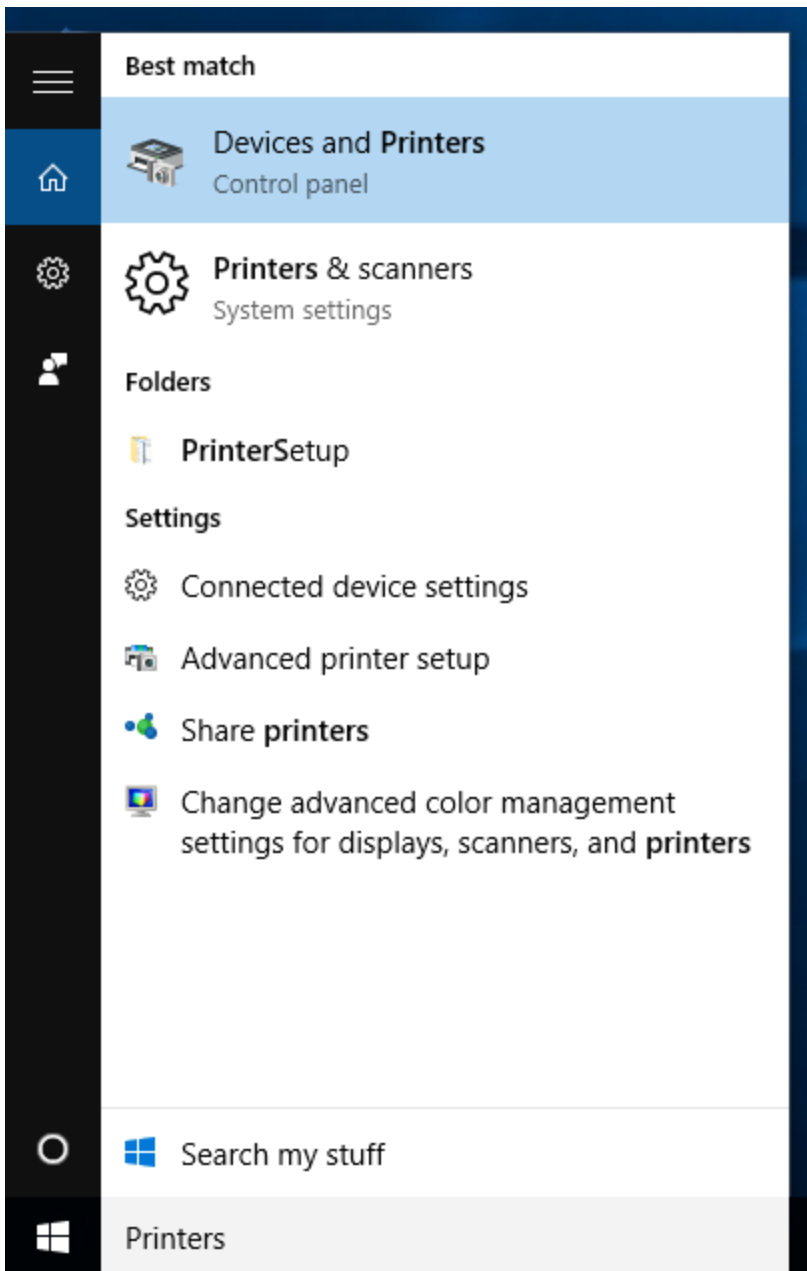
In the Windows Feature screen, click the small plus ('+') beside "Print and Document Services" then click the box beside "LPR Port Monitor" to check that feature.



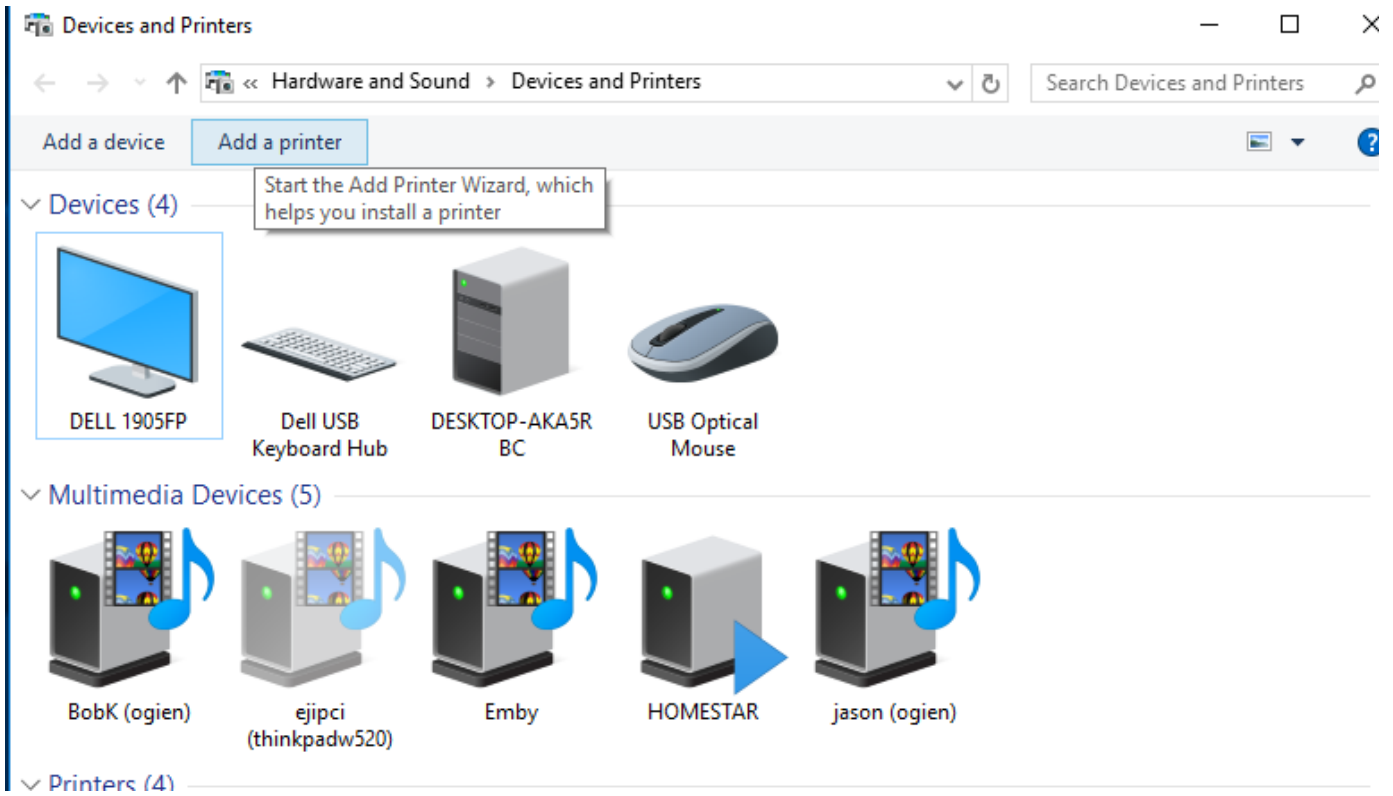
Then click the "OK" button. The windows feature should then enable and you can continue installing printers.

## Install the printer

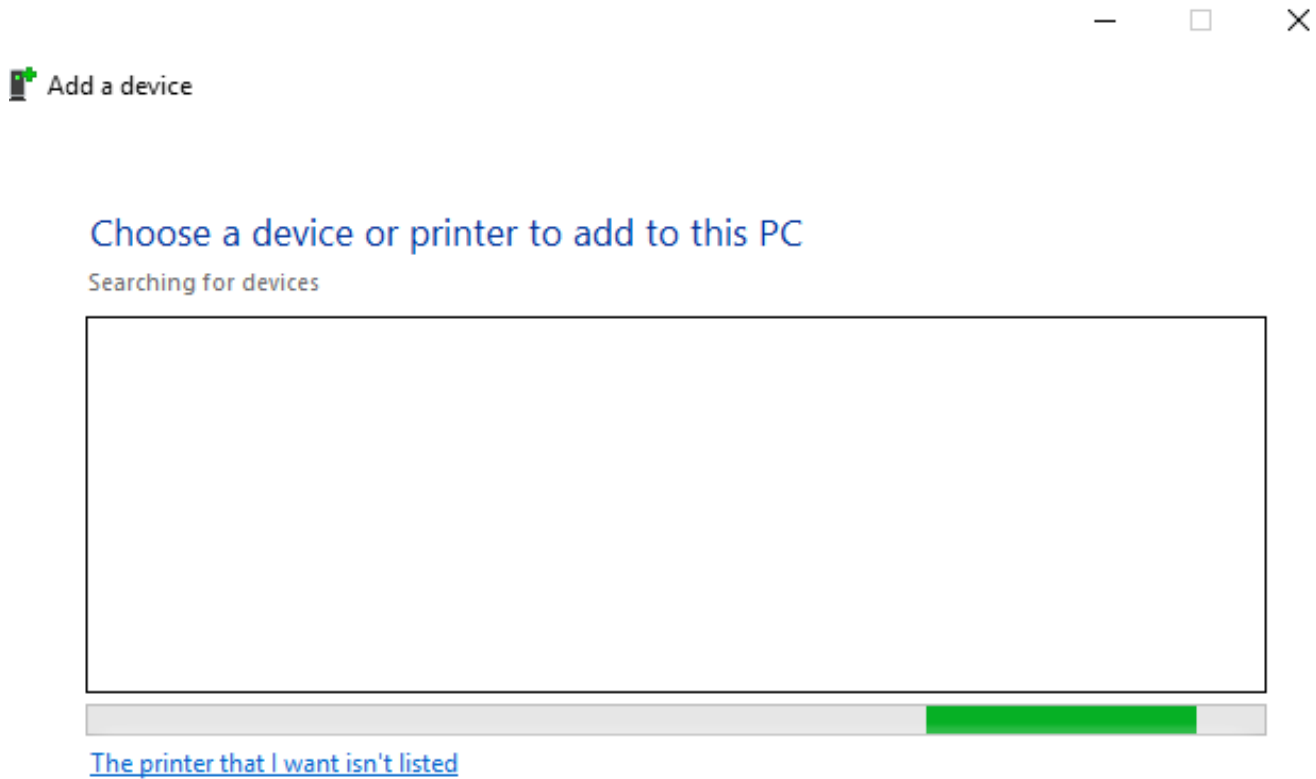
Now we can install the printer itself. First open the "Devices and Printers" window.



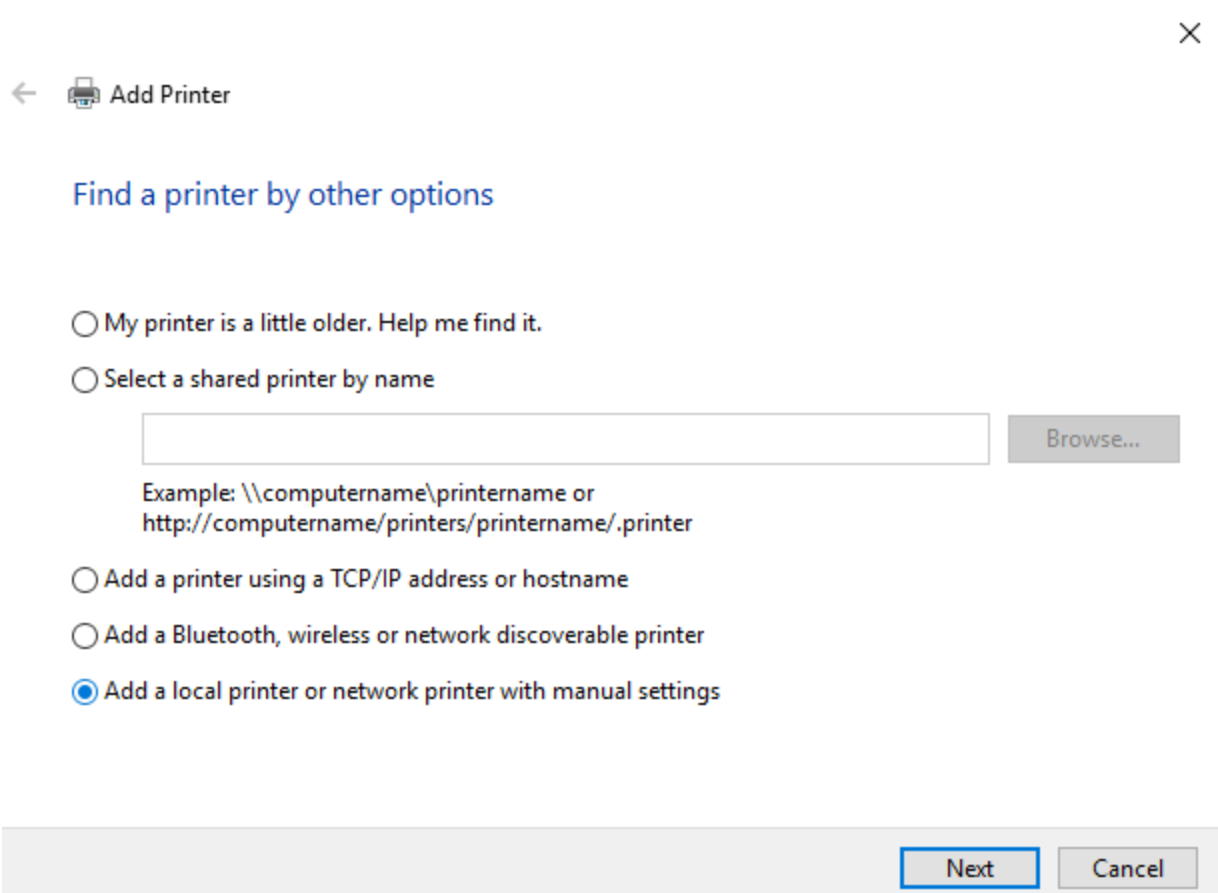
When the devices and printers screen opens, click the button labeled "Add a printer".



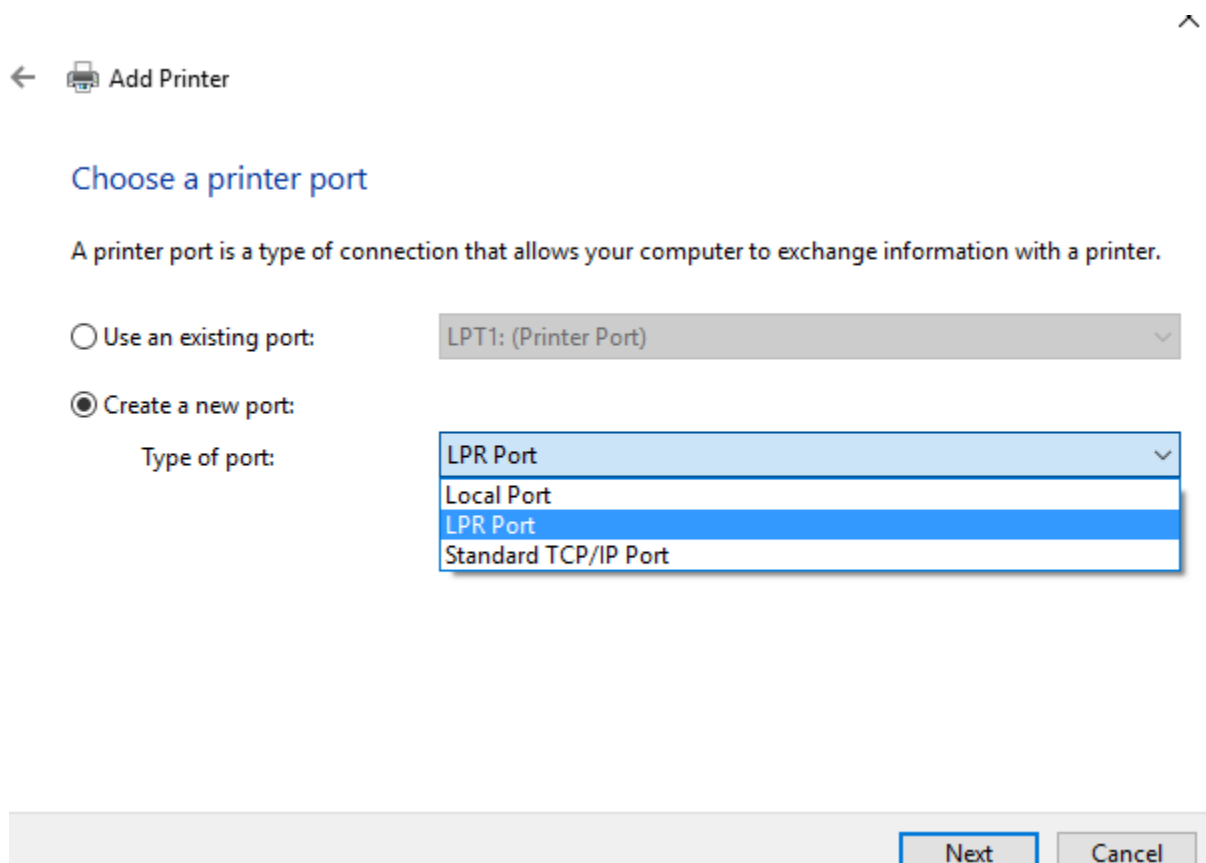
The Add Printer wizard will now start. First select "The Printer that I want isn't listed."



The "Find Printer by options" screen should appear. Select "Add a local printer or network printer with manual settings"



When asked to Choose a printer port, select the "Create a new port" radial and then select "LPR Port" in the drop down menu.



Then click the "Next" button. This will prompt you for a server address and a printer queue name. For CIS printing, the address will always be "printer.cis.rit.edu" and the name of the queue will be the name of the printer (i.e. guppy).

### Add LPR compatible printer

Name or address of server providing lpd:

Name of printer or print queue on that server:

OK Cancel

Click the "OK" button and then select the correct printer driver. Sailfish is a Xerox Phaser 5500DN, we will select "Xerox" under the "Manufacturer" heading and "Xerox Phaser 5500 Series Class Driver" under the "Printers" heading.

← Add Printer

### Install the printer driver

Choose your printer from the list. Click Windows Update to see more models.  
To install the driver from an installation CD, click Have Disk.

Manufacturer	Printers
Savin	Xerox Phaser 5500 Series Class Driver
TOSHIBA	Xerox Phaser 5550 Series Class Driver
UTAX	Xerox Phaser 6120 Class Driver
Xerox	Xerox Phaser 6128MFP-N Class Driver
	Xerox Phaser 6120N Class Driver

This driver is digitally signed. [Tell me why driver signing is important](#)

Windows Update Have Disk...

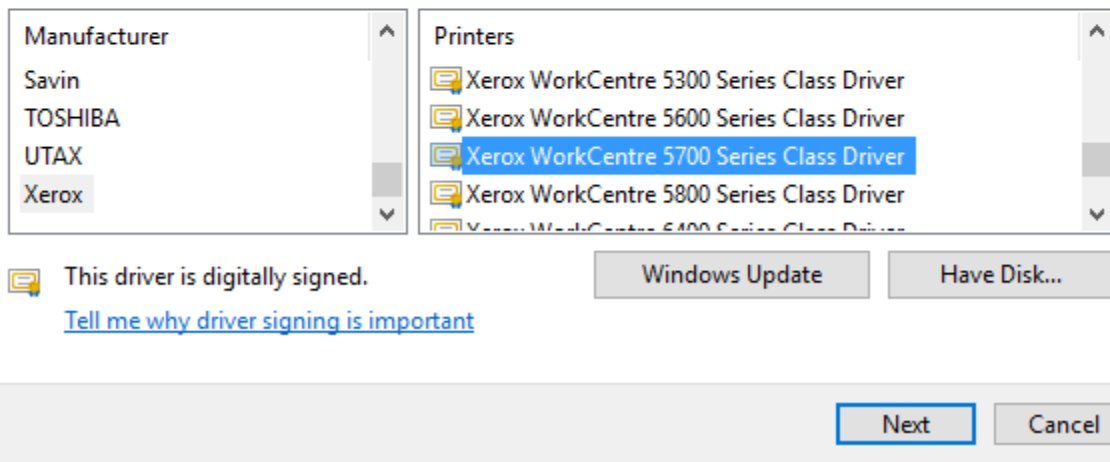
Next Cancel

For Guppy, we will select "Xerox" and "Xerox WorkCentre 5700 Series Class Driver" and click next.

← Add Printer

### Install the printer driver

Choose your printer from the list. Click Windows Update to see more models.  
To install the driver from an installation CD, click Have Disk.



Click the "Next" button, enter a name for the printer (such as sailfish or guppy) and then click "Next" again. You printer will now install. If asked for "Printer Sharing" settings, select the "Do not share this printer" option and then, once again, select "Next". Finally, you can print a test page if you like and/or just click the "Finish" button. The printer is now installed and should be automatically set as your default printer.