

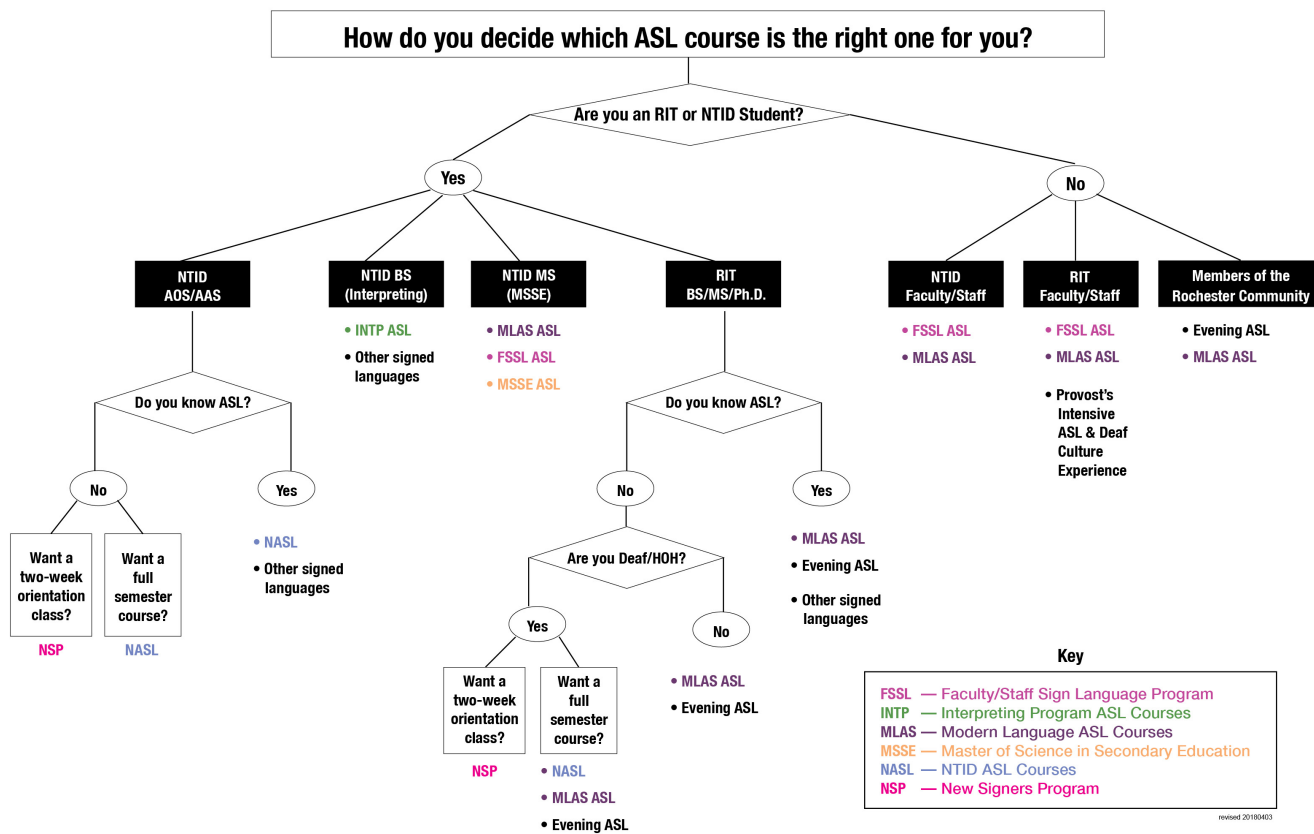
# How to Choose the Right ASL Course

This wiki is provided by NTID's **Department of ASL & Interpreting Education** to assist you in finding RIT courses and resources to support your ASL learning.

RIT offers American Sign Language courses in a variety of formats. Each ASL program has its own eligibility requirements.

The chart below will help you determine which ASL courses are open to you.

Click the appropriate link in the **Page Tree** on the left to find detailed information on the courses and whom to contact for more information.



**Key**

- FSSL** — Faculty/Staff Sign Language Program
- INTP** — Interpreting Program ASL Courses
- MLAS** — Modern Language ASL Courses
- MSSE** — Master of Science in Secondary Education
- NASL** — NTID ASL Courses
- NSP** — New Signers Program

revised 2018/04/03