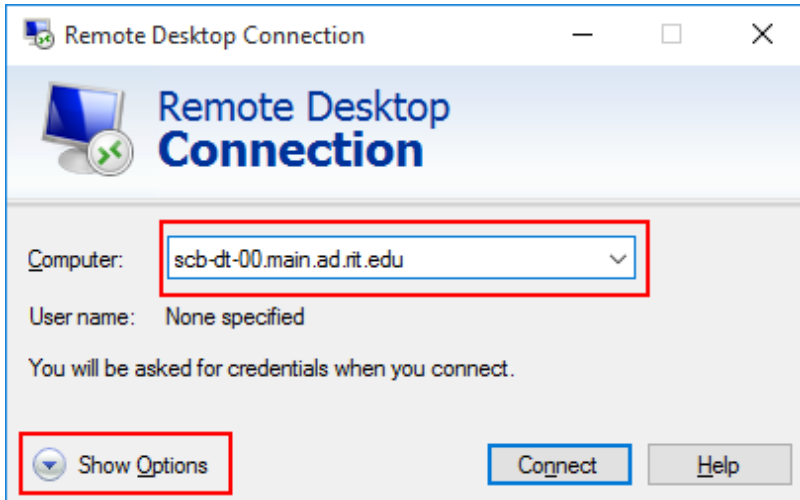


# Remote Desktop

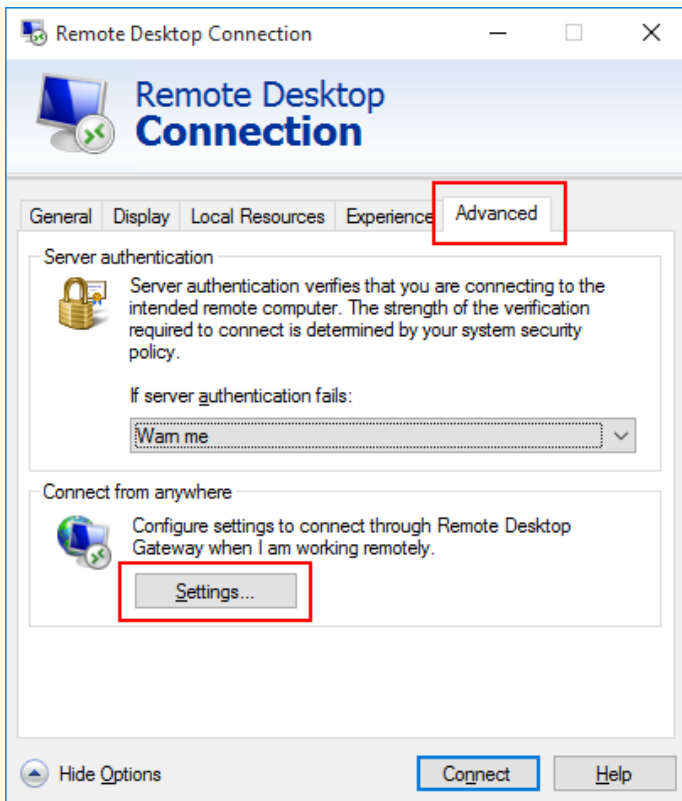
Start by launching **Remote Desktop Connection**.

Under **Computer**, type the computer name of your office computer. If you don't know it, you can reach out to Saunders Technical Support or find it at <https://apps.scb.rit.edu/ci/index.php/MySupport>.

Once you have entered the **Computer** name, click on **Show Options**.



Click on the **Advanced** Tab and then **Settings**.



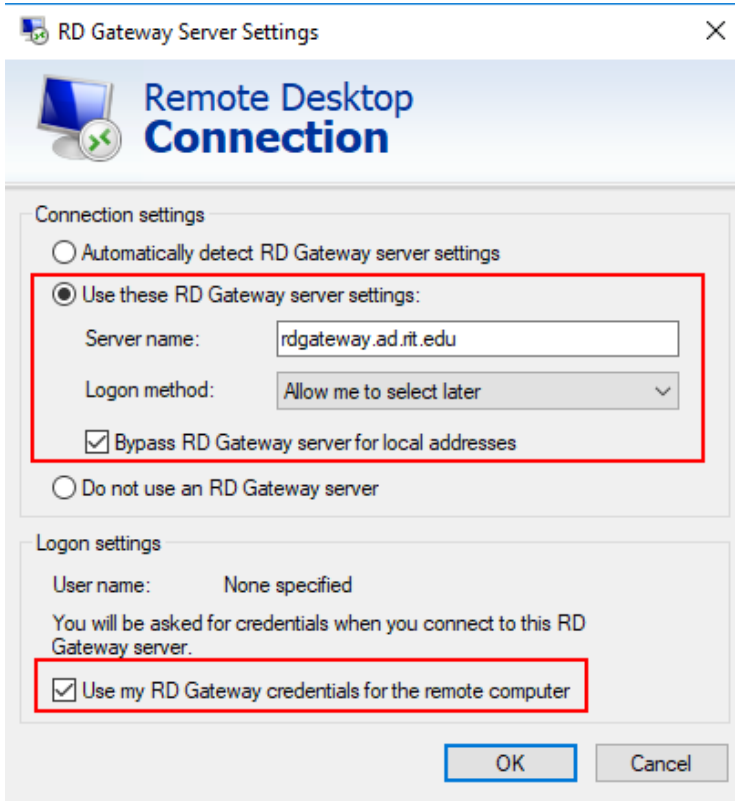
Select **Use these RD Gateway server settings**:

Enter **rdgateway.ad.rit.edu** for the **Server Name**.

Check **Bypass RD Gateway server for local addresses**.

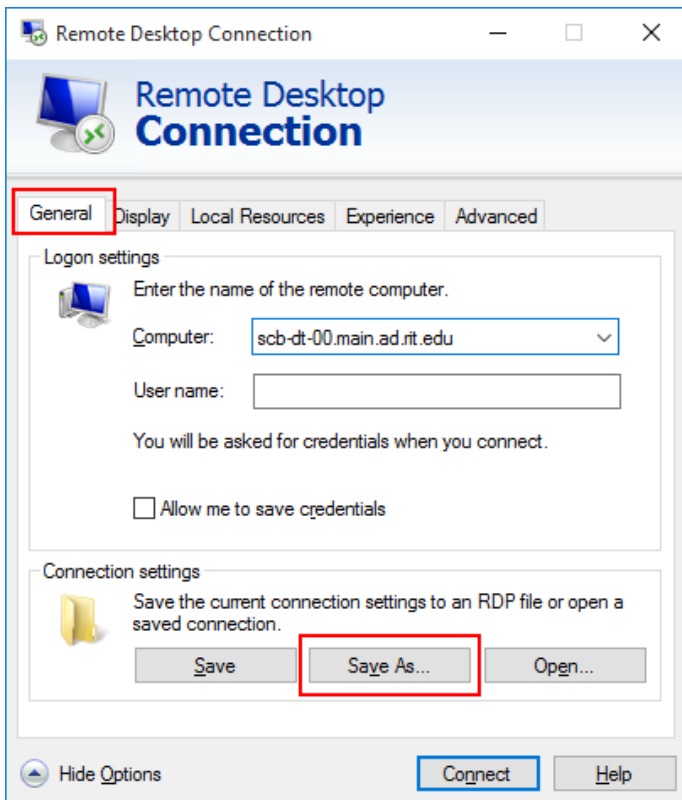
Check **Use my RD Gateway credentials for the remote computer**.

Once done, click **OK**.



Click back on the **General** tab and then **Save As**.

This will now prompt you to save an icon that you can later double-click on to initiate the connection. We recommend using the Save As option so you don't modify your default settings for Remote Desktop.



When you do connect and go to login, be sure to add **MAIN\** in front of your username. For example: **MAIN\abcbbu** instead of just **abcbbu**.

## **ITS Instructions**

See <https://www.rit.edu/its/services/helpful-resources/remote-desktop-gateway>